

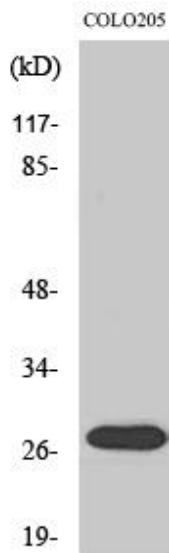


NRIP3 Polyclonal Antibody

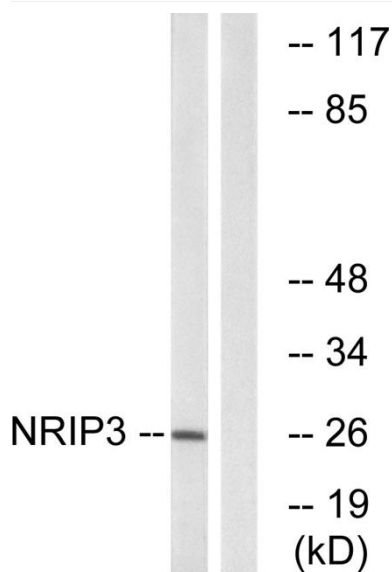
Catalog No	YP-Ab-01919
Isotype	IgG
Reactivity	Human;Mouse
Applications	WB;IHC;IF;ELISA
Gene Name	NRIP3
Protein Name	Nuclear receptor-interacting protein 3
Immunogen	The antiserum was produced against synthesized peptide derived from human NRIP3. AA range:192-241
Specificity	NRIP3 Polyclonal Antibody detects endogenous levels of NRIP3 protein.
Formulation	Liquid in PBS containing 50% glycerol, 0.5% BSA and 0.02% sodium azide.
Source	Polyclonal, Rabbit,IgG
Purification	The antibody was affinity-purified from rabbit antiserum by affinity-chromatography using epitope-specific immunogen.
Dilution	WB: 1/500 - 1/2000. IHC: 1/100 - 1/300. ELISA: 1/20000.. IF 1:50-200
Concentration	1 mg/ml
Purity	≥90%
Storage Stability	-20°C/1 year
Synonyms	NRIP3; C11orf14; Nuclear receptor-interacting protein 3; Sarcoma antigen NY-SAR-105
Observed Band	27kD
Cell Pathway	
Tissue Specificity	Uterus,
Function	proteolysis,
Background	NRIP3 (Nuclear Receptor Interacting Protein 3) is a Protein Coding gene. Gene Ontology (GO) annotations related to NRIP3 include aspartic-type endopeptidase activity. An important paralog of NRIP3 is NRIP2.
matters needing attention	Avoid repeated freezing and thawing!
Usage suggestions	This product can be used in immunological reaction related experiments. For more information, please consult technical personnel.



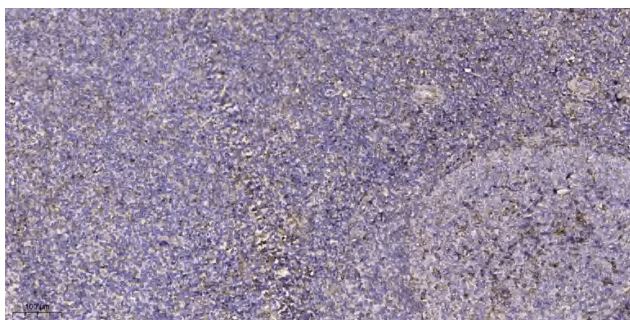
Products Images



Western Blot analysis of various cells using NRIP3 Polyclonal Antibody



Western blot analysis of lysates from COLO cells, using NRIP3 Antibody. The lane on the right is blocked with the synthesized peptide.



Immunohistochemical analysis of paraffin-embedded human tonsil. 1, Antibody was diluted at 1:200(4° overnight). 2, Tris-EDTA,pH9.0 was used for antigen retrieval. 3,Secondary antibody was diluted at 1:200(room temperature, 30min).